

How to configure Internet Explorer for Cache and/or Proxy Settings

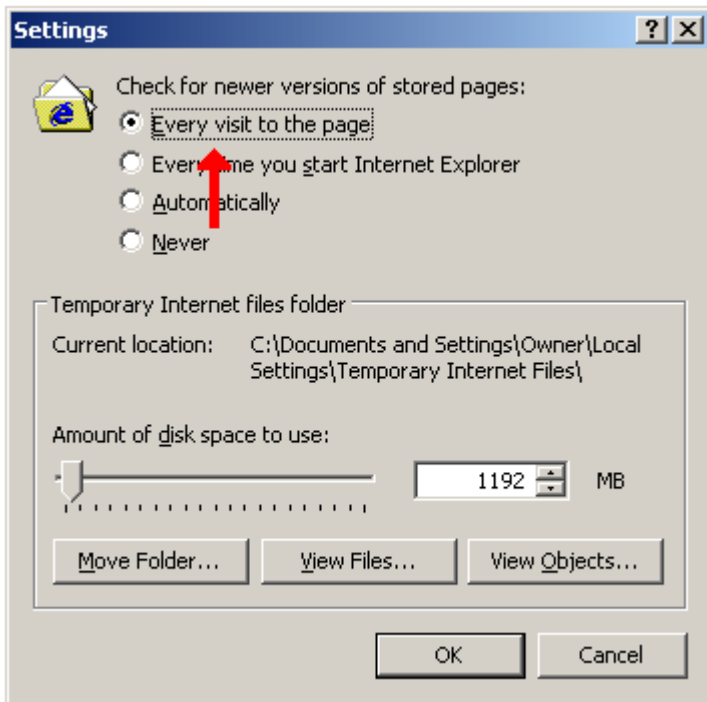
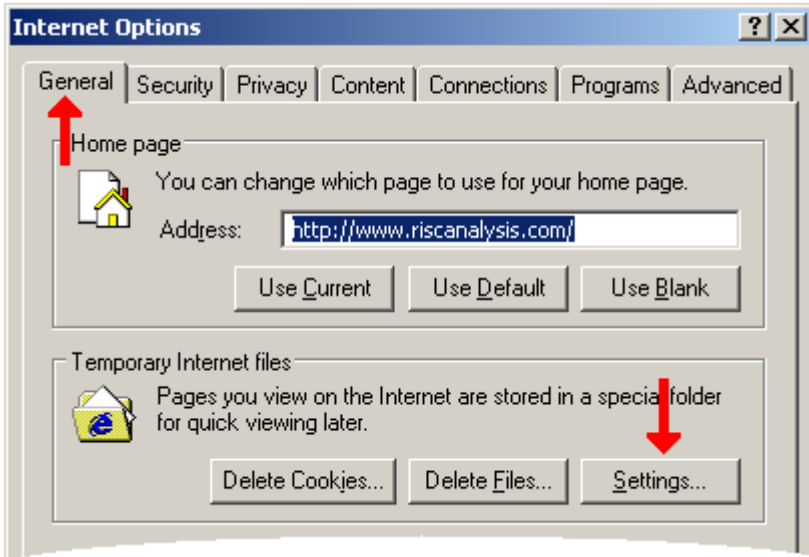
From the Control Panel:-
Click Internet Options

OR

From within Microsoft Internet Explorer:
Click Tools -> Internet Options

1. Cache Settings

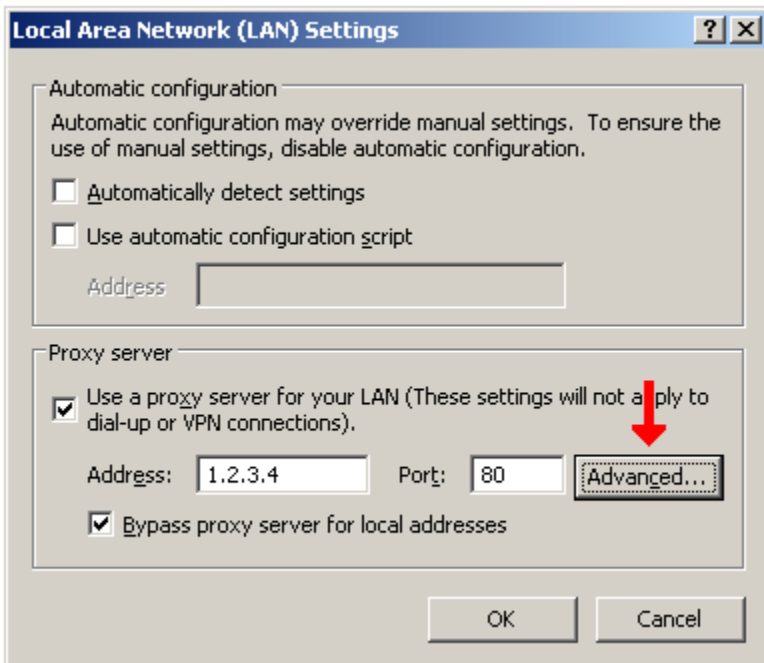
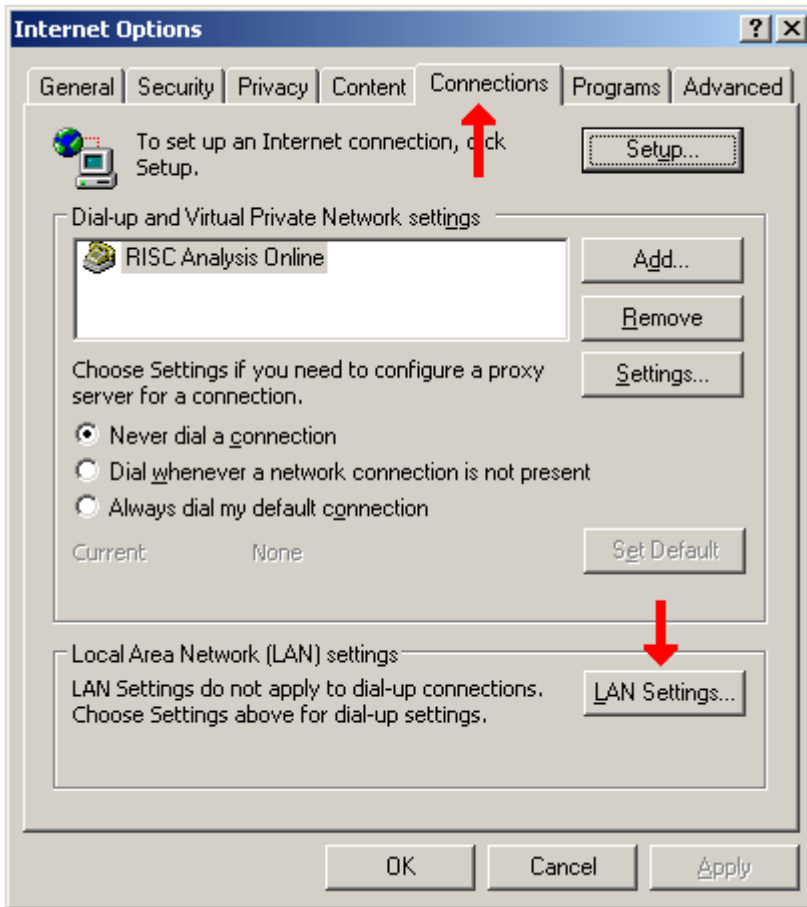
Select the "General Tab" and then Click the "Settings" button



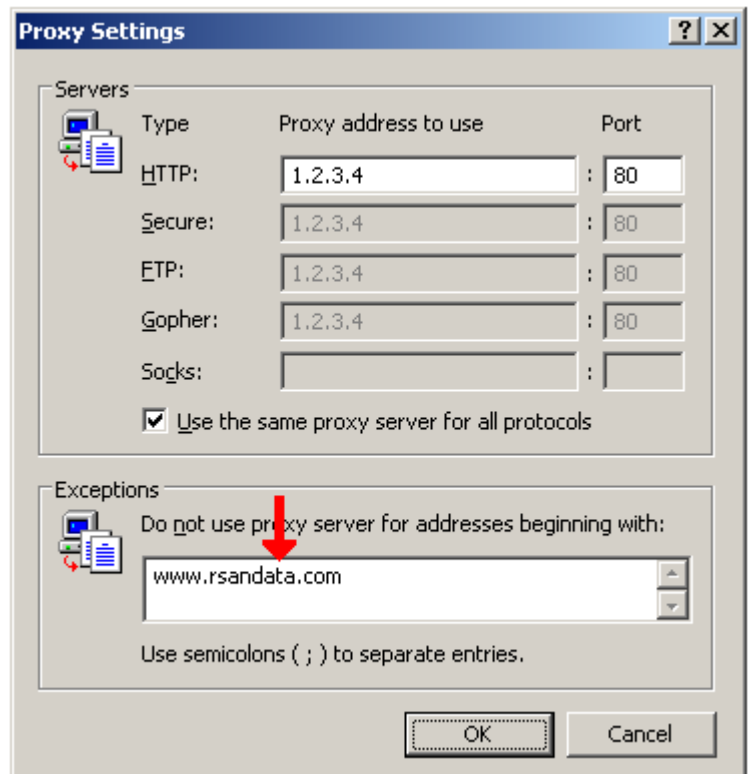
Select "Every Visit...."

2. Proxy Settings

Select the "Connections" tab and then Click the "LAN Settings" button



Click the "Advanced" button



Add www.rsandata.com to the exclusion list